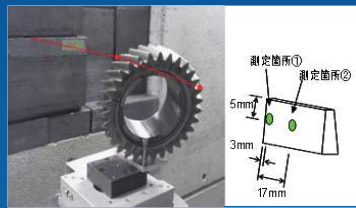
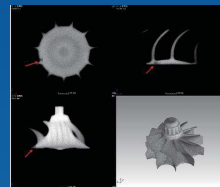


- PPL is a pioneer in analytical X-ray and e-beam technology, including developing the world's first table top synchrotron light source.
- PPL can provide cutting edge X-ray CT solutions for advanced manufacturing processes such as 3D printing.
- PPL has capabilities that extend well beyond the mainstream and can provide tremendous value to customers with challenging requirements.
- PPL can design and build customized equipment to meet the most demanding customer requirements.

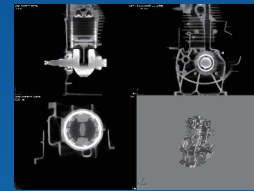
Measurement of residual stress inside metals



Density distribution analysis without using neutrons



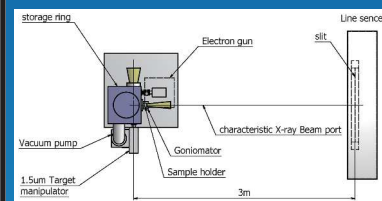
The highest Resolution of 0.3mm in industrial X-ray CT device



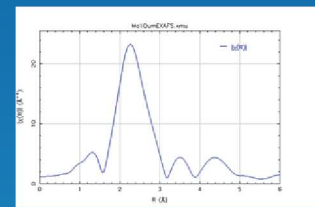
Non-destructive test of 60cm-thickness concrete



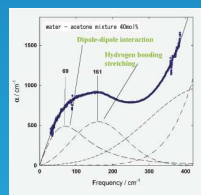
Submicron X-ray microscope CT device in development



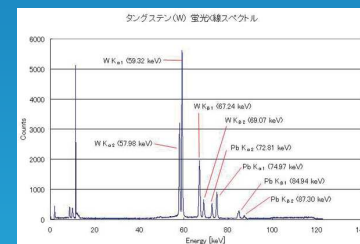
Chemical status analysis using EXAFS spectroscopy



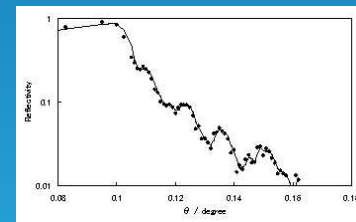
Terahertz radiation power surpasses that of large-scale synchrotrons



X-ray fluorescence for various elements



Measurement of particle size and membrane thickness using SAXS



PhotonTM
Production
Laboratory

PPL is a compact accelerator maker since 1997.
We provide analysis and NDT service.



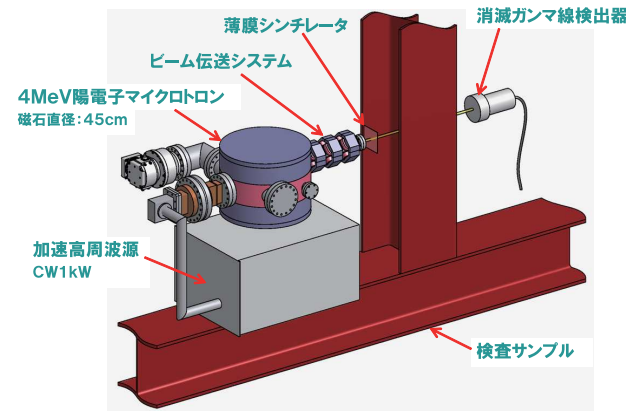
光発生技術で未来を拓く **光子研**

Photon Production Laboratory, Ltd.
<http://www.photon-production.co.jp/>

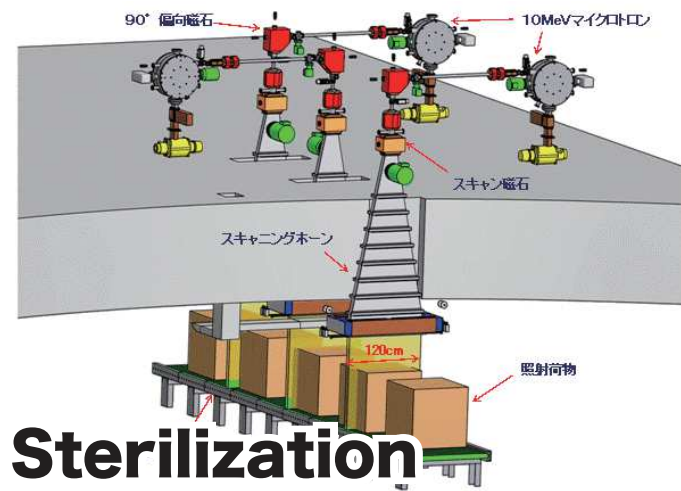
◆ Inquiries such as equipment purchase
Photon Production Laboratory, Ltd.
576-1 Anamura-cho, Kusatsu, Shiga 525-0012 JAPAN
TEL: +81-77-584-5513
FAX: +81-77-584-5523

◆ Inquiries for commissioned analysis
MIRRORCLE CENTER, Ltd.
576-1 Anamura-cho, Kusatsu, Shiga 525-0012 JAPAN
TEL: +81-77-584-5513
FAX: +81-77-584-5523

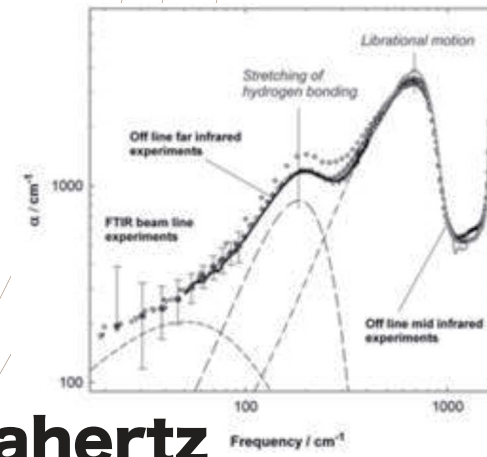
Application Field Opening By Compact Accelerator



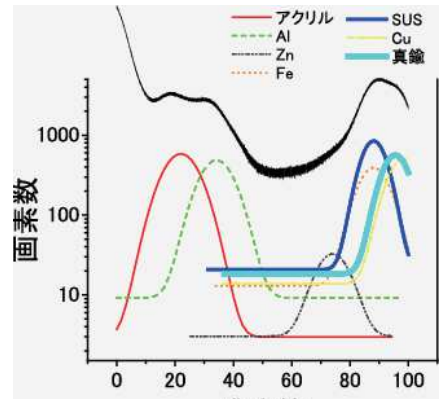
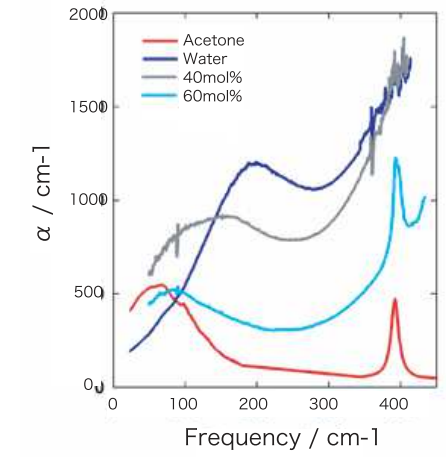
Positron accelerator



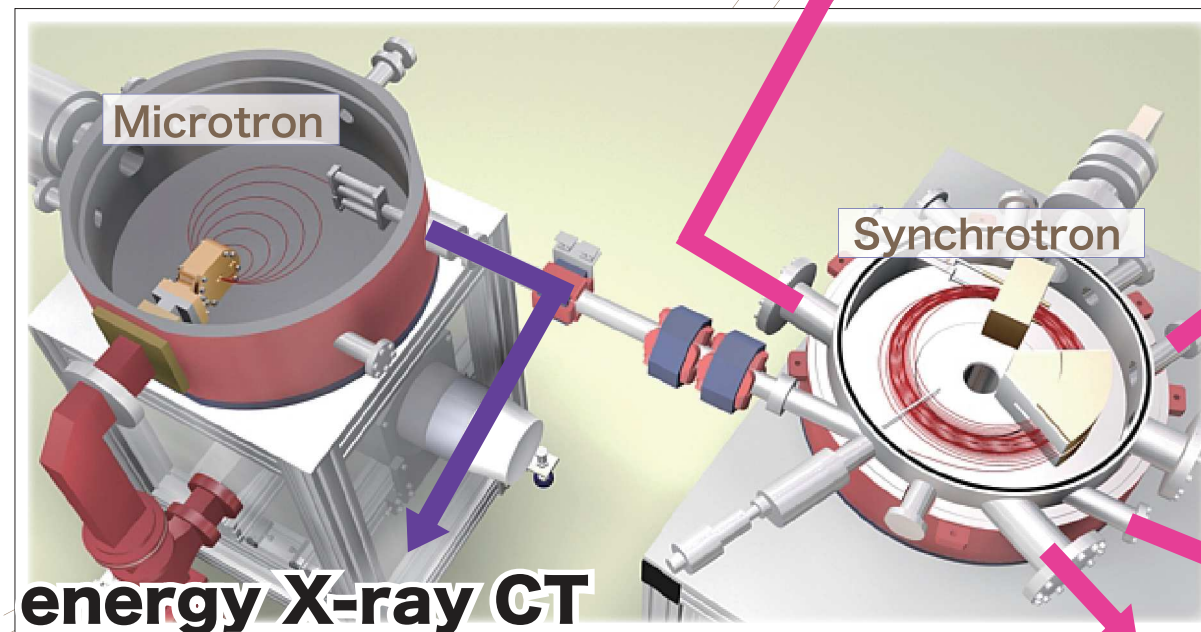
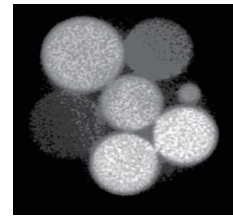
Sterilization



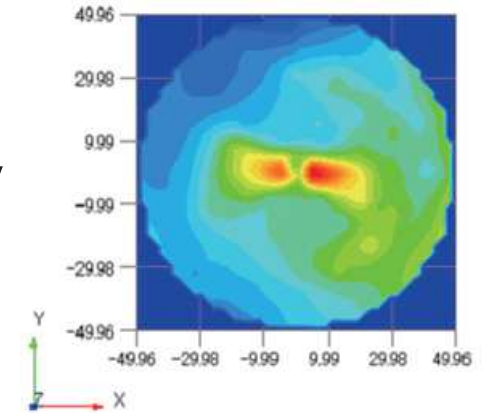
Terahertz



Density distribution



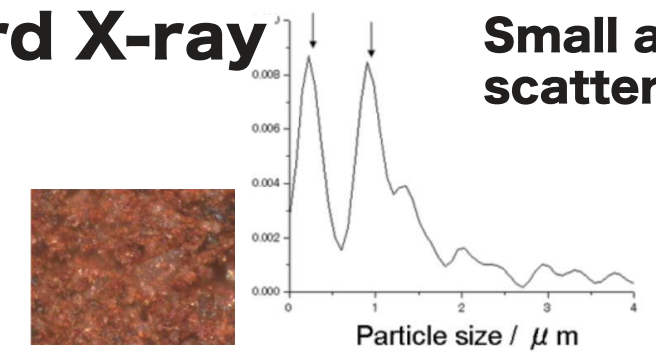
EUV



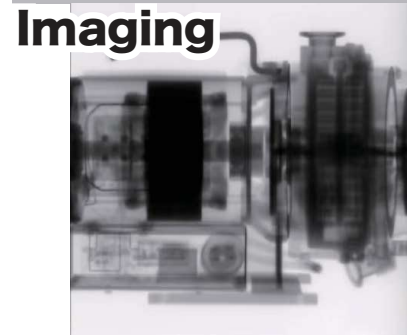
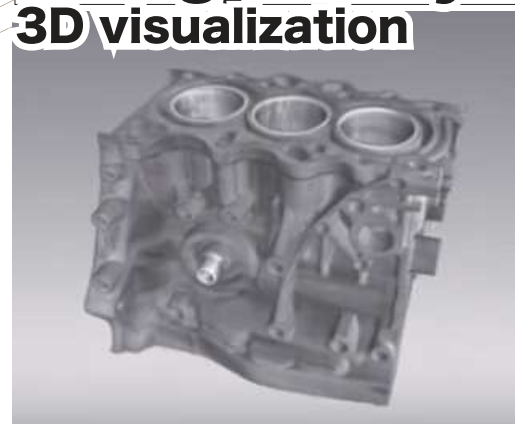
Soft X-ray

Hard X-ray

Small angle scattering

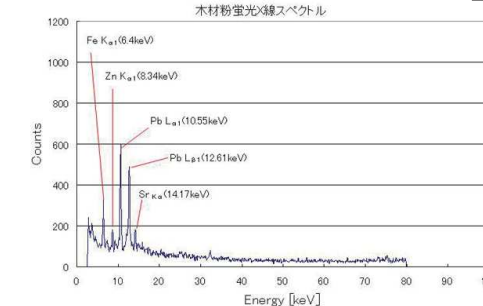


High energy X-ray CT

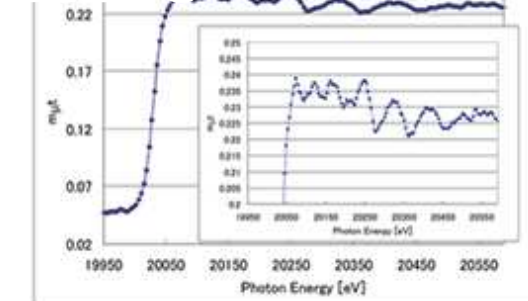


Imaging

TXRF



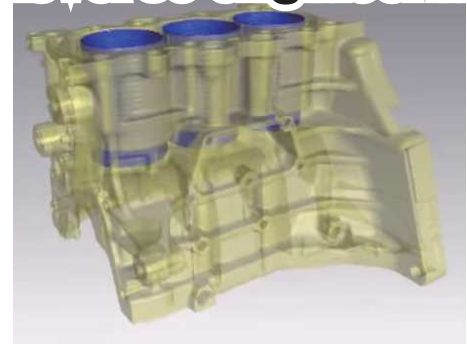
EXAFS



Defect search



Reverse engineering



Residual stress measurement

